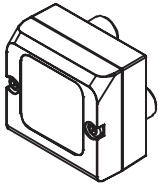


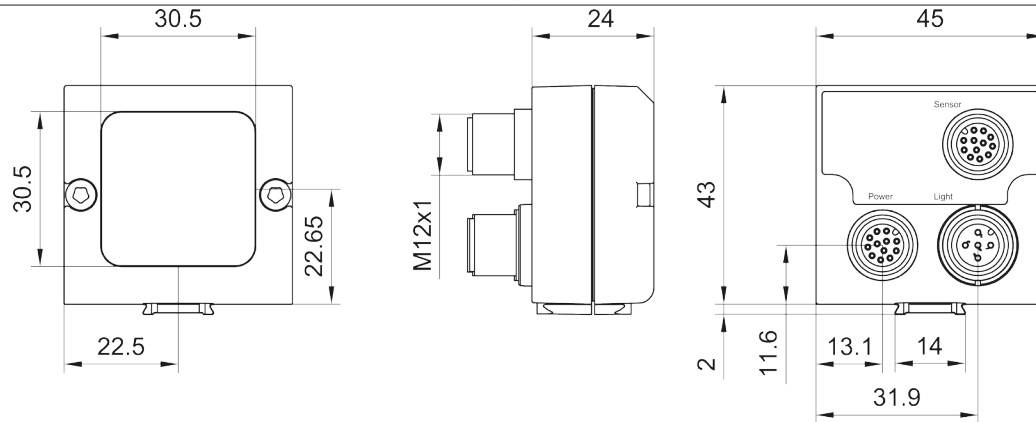
Connection adapter for LED illumination



Dimensional drawing

ALA-24-2x12.12-12.5-67

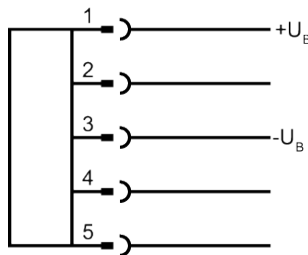
153-00916



Wiring

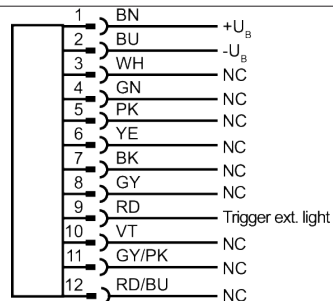
Connection adapter - illumination

154-00502



Connection adapter - sensor power

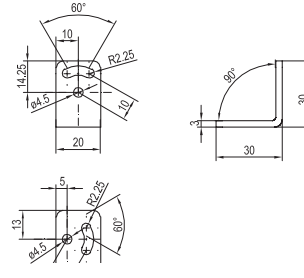
154-00507



Mounting angle

MB-4 300

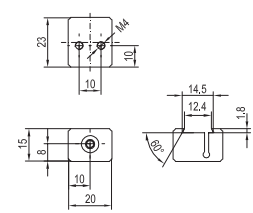
153-00482



Mounting bracket

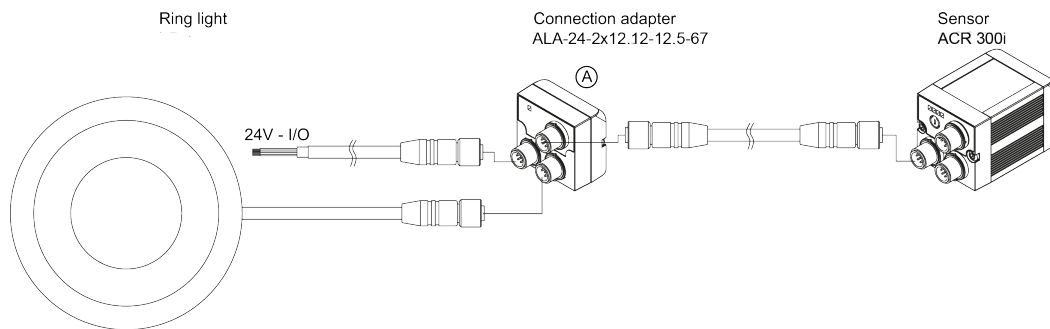
MB-2 300

153-00480



Connection external lightning → connection adapter → sensor

155-01552



Electrical data (typ.)

| | |
|---|-----------------------------|
| Operating voltage U _B : | 24 V ± 10 % |
| Reverse battery protection: | yes |
| Short-circuit protection: | yes |
| Residual ripple within U _B : | ≤ 10 % |
| Turn-on time t _{on} : | typ. 90 μs |
| Turn-off time t _{off} : | typ. 120 μs |
| Switching output: | PNP output |
| Output current (I _e , duration): | 2,5 A |
| Trigger input: | level 10 V...U _B |

Mechanical data (typ.)

| | |
|----------------------------|-------------------------------------|
| Casing material: | Novodur P2HGV GF16 |
| Protection standard: | IP 65 / IP 67 |
| Operating temperature: | 0 ... +50 °C |
| Storage temperature range: | -20 ... +60 °C |
| Connection: | 2x M12x1; 12-pin 1x M12x1; 5-pin |
| Weight: | approx. 58 g |

- The contacts of the connection cable Power and Sensor are internally connected through.
- Connection is made by series connection.
- Connect the connection adapter first and then the sensor.
- For connection, only use the cables that are available as accessories.



These Proximity Switches are not suited for safety related applications.

All rights for alterations reserved

Leuze electronic, Inc., USA New Hudson MI 48165, Phone. +1 248 486 - 4466, Fax +1 248 486 - 6699, www.leuze.com/en/usa