

## Technical data sheet

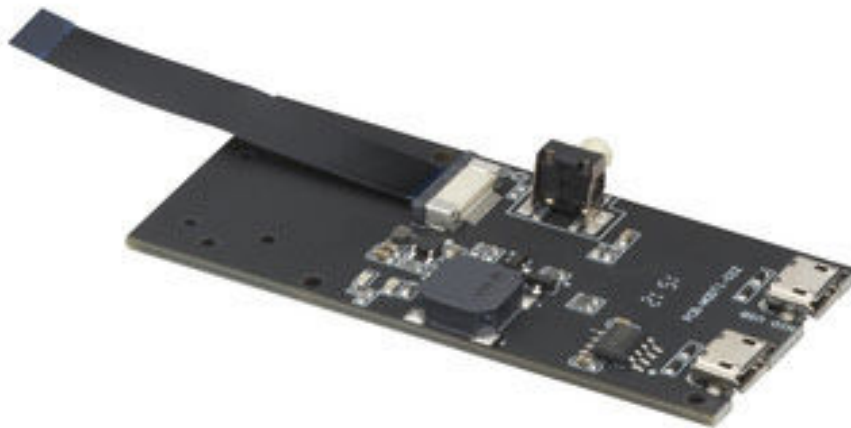
### Adapter set

Part no.: 50151531

MA-DCR50-S7

#### Contents

- Technical data
- Diagrams
- Operation and display
- Notes



For illustration purposes only

# Technical data

## Basic data

Type	Adapter circuit board for laboratory and test purposes open circuit board
------	--

## Electrical data

### Performance data

Supply voltage $U_B$	5 V, DC, via USB from PC
----------------------	--------------------------

## Mechanical data

Dimension (W x H x L)	30 mm x 10 mm x 65 mm
-----------------------	-----------------------

## Operation and display

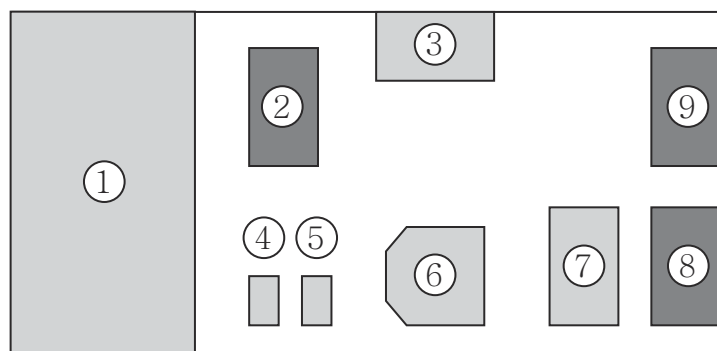
Type of display	LED
Number of LEDs	2 Piece(s)

## Classification

Customs tariff number	85340090
ECLASS 5.1.4	27279201
ECLASS 8.0	27440320
ECLASS 9.0	19200502
ECLASS 10.0	27440320
ECLASS 11.0	27440320
ECLASS 12.0	27440320
ECLASS 13.0	27440320
ECLASS 14.0	27440320
ECLASS 15.0	27440320
ETIM 5.0	EC000313
ETIM 6.0	EC000313
ETIM 7.0	EC000313
ETIM 8.0	EC000313
ETIM 9.0	EC000313
ETIM 10.0	EC000313

# Diagrams

## Electrical connection / layout



- 1 Position Scan Engine DCR50M2/R2-S7
- 2 12-pin ZIF connection to scan engine
- 3 Trigger button
- 4 Green LED, reading successful
- 5 Red LED, operating voltage applied
- 6 Buzzer, reading successful
- 7 USB - UART bridge IC
- 8 Micro USB connection for USB-Virtual Comm port
- 9 Micro USB connection for USB-HID



# Operation and display


LED	Display	Meaning
1	Green, continuous light	Reading successful

# Operation and display

LED	Display	Meaning
2	Red, continuous light	Operating voltage applied

## Notes

 <b>Observe intended use!</b>	
	<ul style="list-style-type: none"> <li>⌘ This product is not a safety sensor and is not intended as personnel protection.</li> <li>⌘ The product may only be put into operation by competent persons.</li> <li>⌘ Only use the product in accordance with its intended use.</li> </ul>

<b>NOTE</b>	
	<ul style="list-style-type: none"> <li>⌘ <b>Using the adapter circuit board</b> The MA-DCR50-S7 adapter circuit board is intended only for laboratory and test purposes and is <b>not</b> to be used for industrial applications!</li> </ul>