

## Technical data sheet

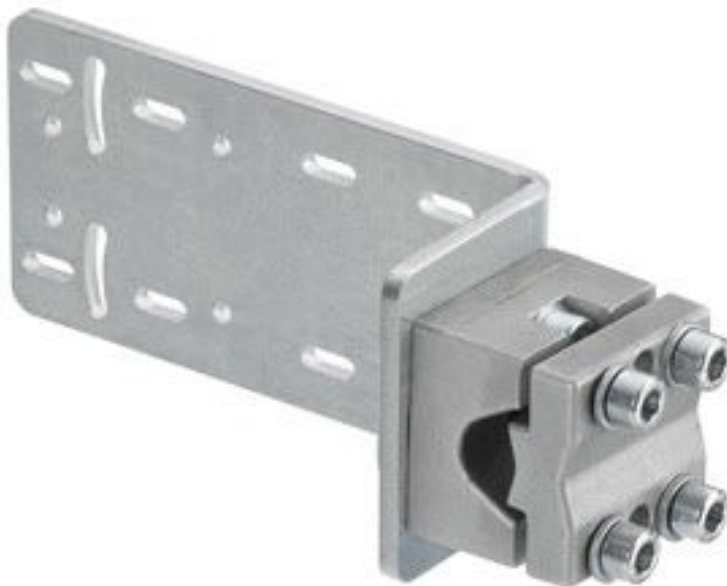
### Mounting device

Part no.: 50144299

BTU 330M-1

#### Contents

- Technical data
- Dimensioned drawings



For illustration purposes only

## Technical data

### Basic data

<b>Contains</b>	8x lock washers
	8x M4 x 10 screws
	8x position washers
<b>Suitable for product group</b>	Stationary 2D-code readers
<b>Suitable for</b>	DCR 200i
	IL AL illumination
	IPS 200i
	IPS 400i

### Mechanical data

<b>Standard designation, metal mounting device</b>	Diecast aluminum
	Steel, galvanized
<b>Design of mounting device</b>	Mounting system
<b>Type of fastening, at system</b>	For 10-16 mm rods
<b>Type of fastening, at device</b>	Screw type
<b>Type of mounting device</b>	Adjustable
	Turning, 360°
<b>Mounting device material</b>	Metal

### Classification

<b>Customs tariff number</b>	39269097
<b>ECLASS 5.1.4</b>	27279202
<b>ECLASS 8.0</b>	27279202
<b>ECLASS 9.0</b>	27273701
<b>ECLASS 10.0</b>	27273701
<b>ECLASS 11.0</b>	27273701
<b>ECLASS 12.0</b>	27273701
<b>ECLASS 13.0</b>	27273701
<b>ECLASS 14.0</b>	27273701
<b>ECLASS 15.0</b>	27273701
<b>ETIM 5.0</b>	EC002498
<b>ETIM 6.0</b>	EC003015
<b>ETIM 7.0</b>	EC003015
<b>ETIM 8.0</b>	EC003015
<b>ETIM 9.0</b>	EC003015
<b>ETIM 10.0</b>	EC003015

## Dimensioned drawings

All dimensions in millimeters

