

## Technical data sheet Energetic diffuse sensor

Part no.: 50133271

FT328I.X3/2N

### Contents

- Technical data
- Dimensioned drawings
- Electrical connection
- Diagrams
- Operation and display
- Part number code
- Notes
- Further information
- Accessories



For illustration purposes only



## Technical data

### Basic data

|                     |  |
|---------------------|--|
| Series              | 328                                      |
| Operating principle | Diffuse reflection principle             |
| Application         | Detection of dark objects at short range |

### Special version

|                 |          |
|-----------------|----------|
| Special version | V-optics |
|-----------------|----------|

### Optical data

|                                  |                                      |
|----------------------------------|--------------------------------------|
| Operating range                  | Guaranteed operating range           |
| Operating range, white 90%       | 0.001 ... 0.11 m                     |
| Operating range, gray 50%        | 0.001 ... 0.1 m                      |
| Operating range, gray 18%        | 0.003 ... 0.08 m                     |
| Operating range, black 6%        | 0.005 ... 0.07 m                     |
| Operating range limit, white 90% | 0.001 ... 0.13 m                     |
| Operating range limit, gray 50%  | 0.001 ... 0.12 m                     |
| Operating range limit, gray 18%  | 0.003 ... 0.1 m                      |
| Operating range limit, black 6%  | 0.005 ... 0.085 m                    |
| Operating range limit            | Typical operating range              |
| Light source                     | LED, Infrared                        |
| Wavelength                       | 850 nm                               |
| Transmitted-signal shape         | Pulsed                               |
| LED group                        | Exempt group (in acc. with EN 62471) |

### Electrical data

|                    |   |
|--------------------|---|
| Protective circuit | Polarity reversal protection<br>Short circuit protected |
|--------------------|---|

### Performance data

|                      |  |
|----------------------|--|
| Supply voltage $U_B$ | 10 ... 30 V, DC, Incl. residual ripple |
| Residual ripple      | 0 ... 15 %, From $U_B$                 |
| Open-circuit current | 0 ... 20 mA                            |

### Outputs

|                                     |            |
|-------------------------------------|------------|
| Number of digital switching outputs | 2 Piece(s) |
|-------------------------------------|------------|

### Switching outputs

|                         |   |
|-------------------------|---|
| Type                    | Digital switching output                      |
| Voltage type            | DC  |
| Switching current, max. | 100 mA  |
| Switching voltage       | high: $\geq(U_B - 2.5V)$<br>low: $\leq 2.5 V$ |

### Switching output 1

|                     |                 |
|---------------------|-----------------|
| Switching element   | Transistor, NPN |
| Switching principle | Light switching |

### Switching output 2

|                     |                 |
|---------------------|-----------------|
| Switching element   | Transistor, NPN |
| Switching principle | Dark switching  |

### Time behavior

|                     |        |
|---------------------|--------|
| Switching frequency | 500 Hz |
| Response time       | 1 ms   |
| Readiness delay     | 300 ms |

### Connection

|                       |            |
|-----------------------|------------|
| Number of connections | 1 Piece(s) |
|-----------------------|------------|

### Connection 1

|                      |                              |
|----------------------|------------------------------|
| Function             | Signal OUT<br>Voltage supply |
| Type of connection   | Cable                        |
| Cable length         | 2,000 mm                     |
| Sheathing material   | PUR                          |
| Cable color          | Black                        |
| Number of conductors | 4 -wire                      |
| Wire cross section   | 0.2 mm <sup>2</sup>          |

### Mechanical data

|                                      |                            |
|--------------------------------------|----------------------------|
| Dimension ( $\varnothing \times L$ ) | 18 mm x 46 mm              |
| Thread size                          | M18 x 1 mm                 |
| Housing material                     | Plastic<br>Stainless steel |
| Stainless steel housing              | V2A                        |
| Plastic housing                      | ABS                        |
| Lens cover material                  | Plastic                    |
| Net weight                           | 70 g                       |
| Housing color                        | Black<br>Red               |

### Operation and display

|                      |              |
|----------------------|--------------|
| Type of display      | LED          |
| Number of LEDs       | 2 Piece(s)   |
| Operational controls | Teach button |

### Environmental data

|                                |               |
|--------------------------------|---------------|
| Ambient temperature, operation | -40 ... 60 °C |
| Ambient temperature, storage   | -40 ... 70 °C |

### Certifications

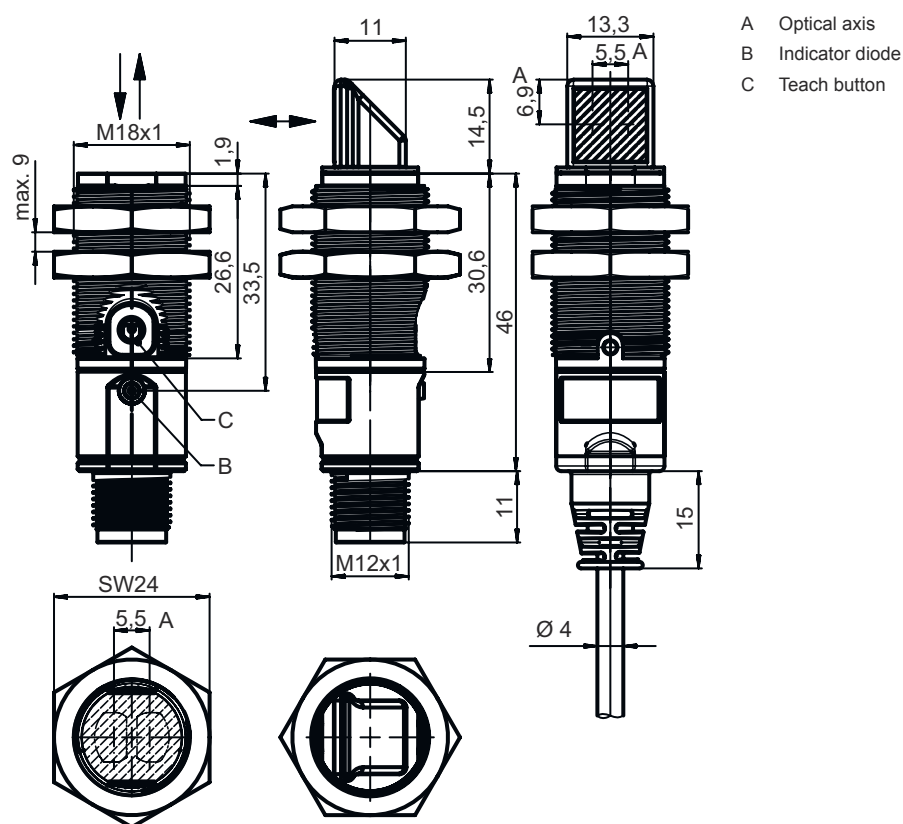
|                      |               |
|----------------------|---------------|
| Degree of protection | IP 67         |
| Protection class     | III           |
| Approvals            | c UL US       |
| Standards applied    | IEC 60947-5-2 |

### Classification

|                       |          |
|-----------------------|----------|
| Customs tariff number | 85365019 |
| ECLASS 5.1.4          | 27270903 |
| ECLASS 8.0            | 27270903 |
| ECLASS 9.0            | 27270903 |
| ECLASS 10.0           | 27270903 |
| ECLASS 11.0           | 27270903 |
| ECLASS 12.0           | 27270903 |
| ECLASS 13.0           | 27270903 |
| ECLASS 14.0           | 27270903 |
| ECLASS 15.0           | 27270903 |
| ECLASS 16.0           | 27270903 |
| ETIM 5.0              | EC001821 |
| ETIM 6.0              | EC001821 |
| ETIM 7.0              | EC001821 |
| ETIM 8.0              | EC001821 |
| ETIM 9.0              | EC001821 |
| ETIM 10.0             | EC001821 |
| UNSPSC 26.08          | 39121528 |

## Dimensioned drawings

All dimensions in millimeters



## Electrical connection

### Connection 1

|                      |                     |
|----------------------|---------------------|
| Function             | Signal OUT          |
|                      | Voltage supply      |
| Type of connection   | Cable               |
| Cable length         | 2,000 mm            |
| Sheathing material   | PUR                 |
| Cable color          | Black               |
| Number of conductors | 4 -wire             |
| Wire cross section   | 0.2 mm <sup>2</sup> |

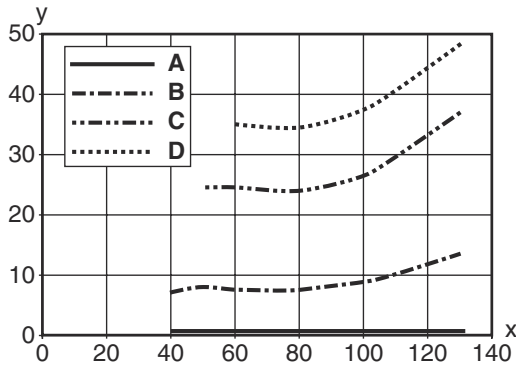
### Conductor color

### Conductor assignment

|       |       |
|-------|-------|
| Brown | V+    |
| White | OUT 2 |
| Blue  | GND   |
| Black | OUT 1 |

# Diagrams

## Typ. black/white behavior



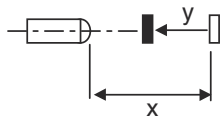
x Range [mm]  
y Reduction of range [mm]

- A White 90%
- B Gray 50%
- C Gray 18%
- D Black 6%

**Fading: black/white error < 50 %**

The black/white error is calculated from the operating range against white and the reduction of the operating range against black:

$$\text{black/white error} = \frac{\text{reduction of the operating range against black}}{\text{operating range against white}} \times 100\%$$



## Operation and display

| LED | Display                  | Meaning               |
|-----|--------------------------|-----------------------|
| 1   | Green, continuous light  | Operational readiness |
|     | Yellow, continuous light | Object detected       |

## Part number code

Part designation: **XXX328BY-AAAF.BB/CC-DDD**

|               |   |
|---------------|---|
| <b>XXX328</b> | <p><b>Operating principle</b><br/>                     PRK: Retro-reflective photoelectric sensor with polarization filter<br/>                     ET: energetic diffuse reflection sensor<br/>                     FT: diffuse reflection sensor with fading<br/>                     LE: Throughbeam photoelectric sensor receiver<br/>                     LS: throughbeam photoelectric sensor transmitter</p> |
| <b>Y</b>      | <p><b>Light type</b><br/>                     n/a: red light<br/>                     I: infrared light</p>   |
| <b>AAAF</b>   | <p><b>Preset range (optional)</b><br/>                     n/a: operating range acc. to data sheet<br/>                     xxxF: Preset range [mm]</p>   |
| <b>BB</b>     | <p><b>Equipment</b><br/>                     n/a: axial optics<br/>                     W: 90° angular optics<br/>                     3: teach-in via button<br/>                     X: reinforced fading</p>   |



## Part number code

|            |  |
|------------|--|
| <b>CC</b>  | <b>Switching output / function (OUT1 = pin 4, OUT2 = pin 2):</b><br>4: PNP transistor output, light switching<br>P: PNP transistor output, dark switching<br>2: NPN transistor output, light switching<br>N: NPN transistor output, dark switching<br>9: input for transmitter deactivation (deactivation with HIGH signal)<br>D: Input for transmitter deactivation (deactivation with LOW signal)<br>X: pin not used |
| <b>DDD</b> | <b>Electrical connection</b><br>n/a: cable, standard length 2000 mm, 4-wire<br>M12: M12 connector, 4-pin (plug)  |


### Note

|  |  |
|--|--|
|  | ↪ A list with all available device types can be found on the Leuze website at <a href="http://www.leuze.com">www.leuze.com</a> . |
|--|--|

## Notes

|   |   |
|---|---|
|  | <b>Observe intended use!</b>  |
|  | ↪ This product is not a safety sensor and is not intended as personnel protection.<br>↪ The product may only be put into operation by competent persons.<br>↪ Only use the product in accordance with its intended use. |

### For UL applications:


|  |   |
|--|---|
|  | ↪ For UL applications, use is only permitted in Class 2 circuits in accordance with the NEC (National Electric Code).<br>↪ These proximity switches shall be used with UL Listed Cable assemblies rated 30V, 0.5A min, in the field installation, or equivalent (categories: CYJV/ CYJV7 or PVVA/PVVA7) |
|--|---|

## Further information

- Sum of the output currents for both outputs, 50 mA for ambient temperatures > 40 °C
- With the set scanning range, a tolerance of the operating range is possible depending on the reflection properties of the material surface.


## Accessories

### Mounting technology - Mounting brackets



|  | Part no. | Designation | Article          | Description  |
|--|----------|-------------|------------------|--|
|  | 50113548 | BT D18M.5   | Mounting bracket | Diameter, inner: 18 mm<br>Design of mounting device: Angle, L-shape<br>Fastening, at system: Through-hole mounting<br>Mounting bracket, at device: Screw type<br>Type of mounting device: Rigid<br>Material: Stainless steel |

## Accessories

### Mounting technology - Rod mounts

|  | Part no. | Designation  | Article         | Description  |
|--|----------|--------------|-----------------|--|
|  | 50117490 | BTU D18M-D12 | Mounting system | Design of mounting device: Mounting system<br>Fastening, at system: Through-hole mounting<br>Mounting bracket, at device: Screw type<br>Type of mounting device: Clampable, Adjustable, Turning, 360°<br>Material: Metal |

### Mounting technology - Other

|   | Part no. | Designation | Article                   | Description  |
|---|----------|-------------|---------------------------|--|
|   | 50083189 | BT 318-ARH  | Adjustment fastening part | Design of mounting device: Mounting plate<br>Fastening, at system: Through-hole mounting<br>Mounting bracket, at device: Screw type<br>Type of mounting device: Swiveling, Adjustable<br>Material: Metal<br>Shock absorber: No   |
|  | 50126631 | BT 328M     | Fastening                 | Contains: 2x M18 mounting nut<br>Design of mounting device: Mounting clamp<br>Fastening, at system: For 18 mm rod, Through-hole mounting<br>Mounting bracket, at device: Screw type<br>Type of mounting device: Turning, 360°<br>Material: Stainless steel<br>Shock absorber: No |

#### Note



A list with all available accessories can be found on the Leuze website in the Download tab of the article detailed page.