

Technical data sheet

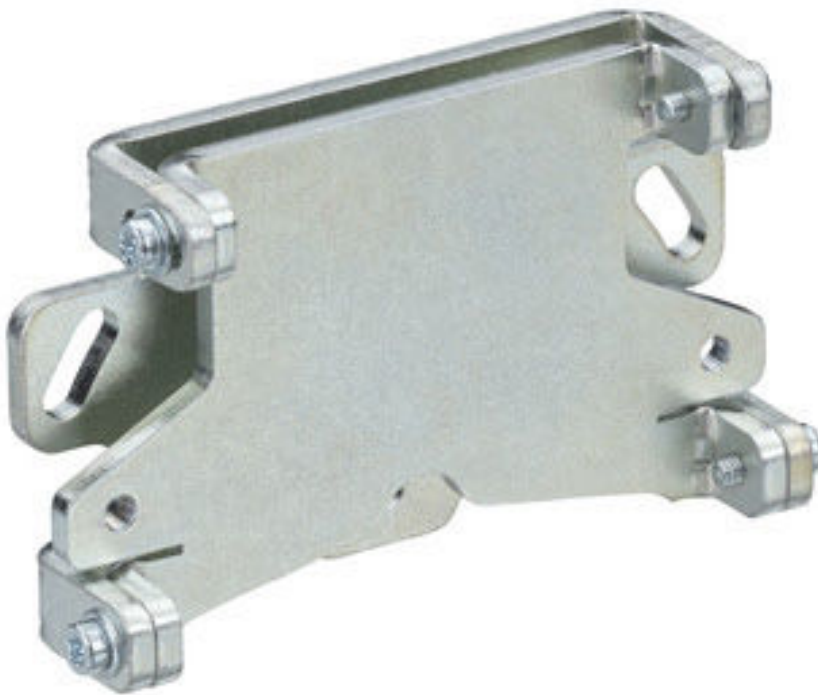
Mounting system

Part no.: 50153212

BTU 510M-Set

Contents

- Technical data
- Dimensioned drawings
- Notes



For illustration purposes only

Technical data

Basic data

| | |
|--------------|--------------------------------|
| Suitable for | Laser scanner ROD 300, ROD 500 |
|--------------|--------------------------------|

Mechanical data

| | |
|------------------------------|--|
| Dimension (W x H x L) | 90 mm x 66 mm x 29 mm |
| Net weight | 510 g |
| Housing color | Silver |
| Design of mounting device | Mounting system, adjustability in 2 axes |
| Type of fastening, at system | Through-hole mounting |
| Type of fastening, at device | Screw type |
| Swivel range | -5 ... 5 ° |
| Mounting device material | Steel, galvanized |

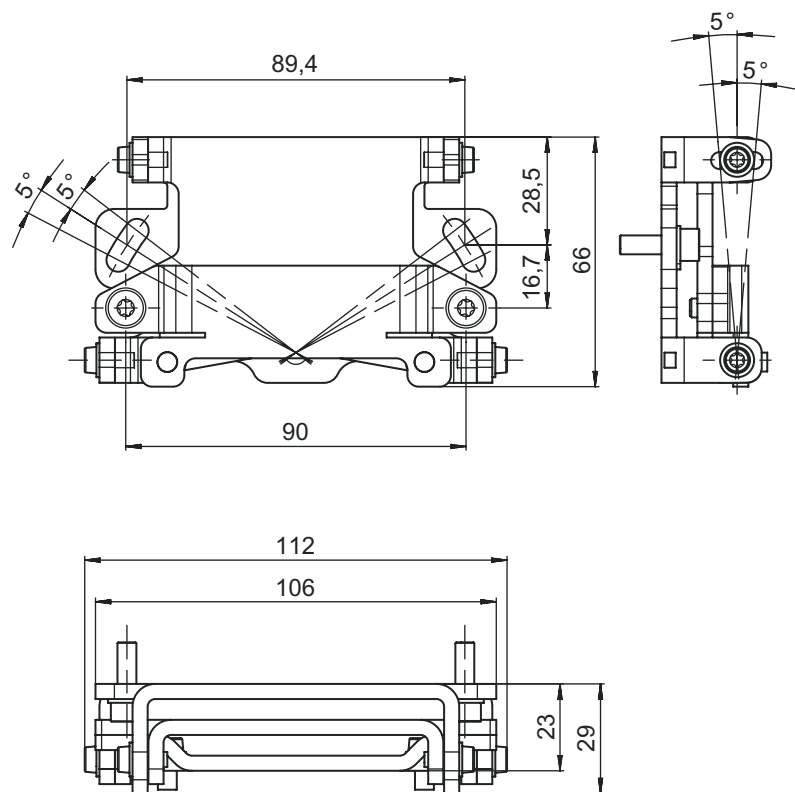
Classification

| | |
|-----------------------|----------|
| Customs tariff number | 83024900 |
| ECLASS 5.1.4 | 27279202 |
| ECLASS 8.0 | 27279202 |
| ECLASS 9.0 | 27273701 |
| ECLASS 10.0 | 27273701 |
| ECLASS 11.0 | 27273701 |
| ECLASS 12.0 | 27273701 |
| ECLASS 13.0 | 27273701 |
| ECLASS 14.0 | 27273701 |
| ECLASS 15.0 | 27273701 |
| ECLASS 16.0 | 27273701 |
| ETIM 5.0 | EC002498 |
| ETIM 6.0 | EC003015 |
| ETIM 7.0 | EC003015 |
| ETIM 8.0 | EC003015 |
| ETIM 9.0 | EC003015 |
| ETIM 10.0 | EC003015 |
| UNSPSC 26.08 | 31242100 |

Dimensioned drawings

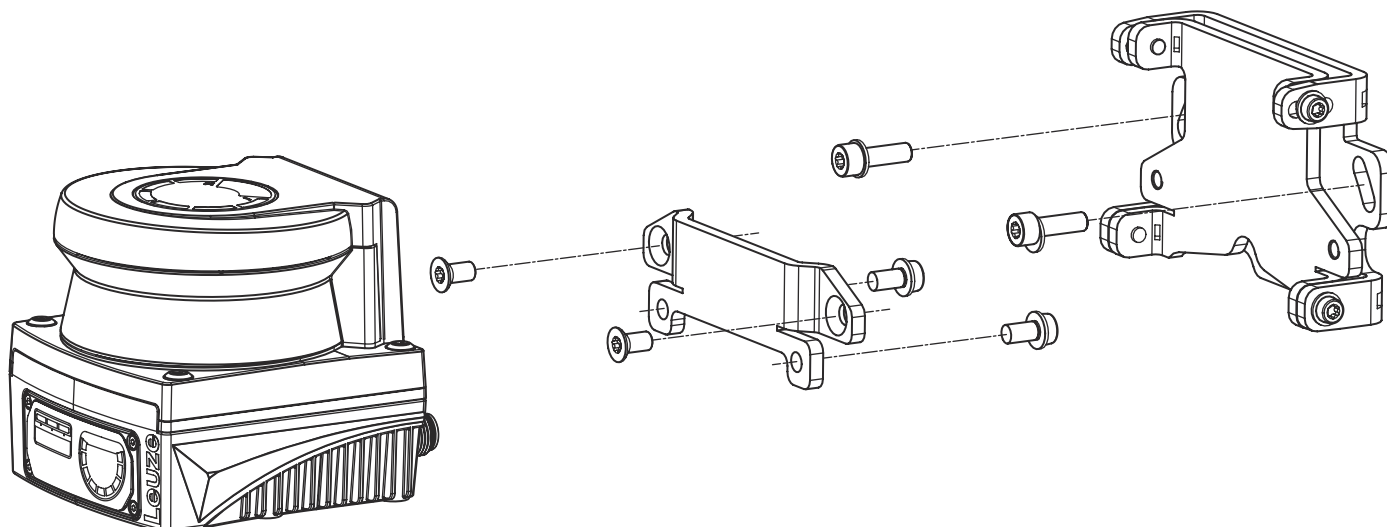
All dimensions in millimeters

Mounting system BTU 510M



Dimensioned drawings

Mounting with wall mount and attachment adapter



- Mount the wall mount on the system side. Two M5x16 cylinder head screws with washers are included for this purpose.
- Mount the safety sensor on the BT 510M attachment adapter using the enclosed M5x10 countersunk screws (tightening torque = 2.3 Nm).
- Mount the safety sensor (with the attachment adapter) on the BTU 510M mounting system. Fasten the countersunk head screw with 4.5 Nm.
- Align the safety sensor on the BTU 510M mounting system vertically and horizontally:
 - using the slotted holes in the wall section with the M5 cylinder head screws as well as
 - using the inclination via the slotted holes of the M4 cylinder head screws.
- After aligning the safety sensor, secure it by tightening the four M4 cylinder head screws to 3.0 Nm and the M5 cylinder head screws on the system side.

Notes

NOTE



↗ The scanner can also be mounted directly on the mounting system without the BT 510M mounting adapter. Please note that the scanning range is limited to -135° ... $+135^{\circ}$.