

Technical data sheet

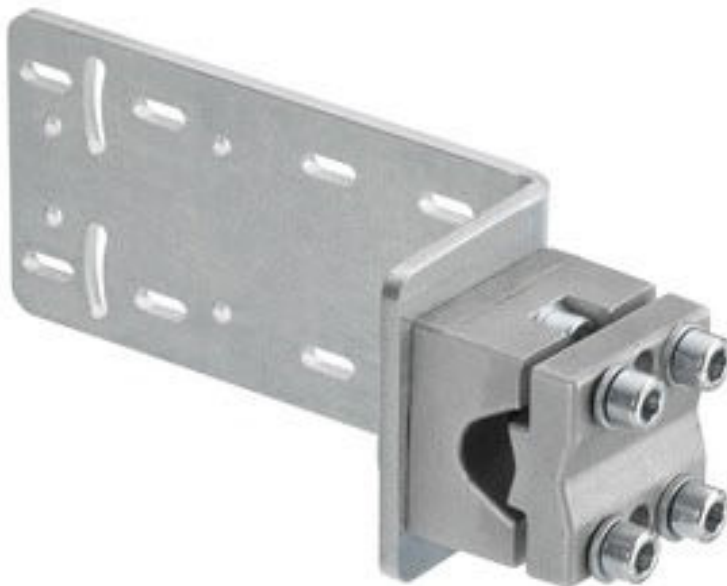
Mounting device

Part no.: 50144299

BTU 330M-1

Contents

- Technical data
- Dimensioned drawings



For illustration purposes only

Technical data

Basic data

| | |
|-----------------------------------|----------------------------|
| Contains | 8x lock washers |
| | 8x M4 x 10 screws |
| | 8x position washers |
| Suitable for product group | Stationary 2D-code readers |
| Suitable for | DCR 200i |
| | IL AL illumination |
| | IPS 200i |
| | IPS 400i |

Mechanical data

| | |
|--|-------------------|
| Standard designation, metal mounting device | Diecast aluminum |
| | Steel, galvanized |
| Net weight | 340 g |
| Design of mounting device | Mounting system |
| Type of fastening, at system | For 10-16 mm rods |
| Type of fastening, at device | Screw type |
| Type of mounting device | Adjustable |
| | Turning, 360° |
| Mounting device material | Metal |

Classification

| | |
|------------------------------|----------|
| Customs tariff number | 39269097 |
| ECLASS 5.1.4 | 27279202 |
| ECLASS 8.0 | 27279202 |
| ECLASS 9.0 | 27273701 |
| ECLASS 10.0 | 27273701 |
| ECLASS 11.0 | 27273701 |
| ECLASS 12.0 | 27273701 |
| ECLASS 13.0 | 27273701 |
| ECLASS 14.0 | 27273701 |
| ECLASS 15.0 | 27273701 |
| ECLASS 16.0 | 27273701 |
| ETIM 5.0 | EC002498 |
| ETIM 6.0 | EC003015 |
| ETIM 7.0 | EC003015 |
| ETIM 8.0 | EC003015 |
| ETIM 9.0 | EC003015 |
| ETIM 10.0 | EC003015 |
| UNSPSC 26.08 | 31242100 |

Dimensioned drawings

All dimensions in millimeters

