

## Technical data sheet

### Throughbeam photoelectric sensor receiver

Part no.: 50134460

LE49CI/4W-TB



For illustration purposes only

#### Contents

- Technical data
- Dimensioned drawings
- Electrical connection
- Diagrams
- Operation and display
- Suitable transmitters
- Part number code
- Notes
- Further information
- Accessories



## Technical data

### Basic data

|                     |                       |
|---------------------|-----------------------|
| Series              | 49C                   |
| Operating principle | Throughbeam principle |
| Device type         | Receiver              |

### Special version

|                 |                |
|-----------------|----------------|
| Special version | Warning output |
|-----------------|----------------|

### Optical data

|                       |                            |
|-----------------------|----------------------------|
| Operating range       | 0.5 ... 120 m              |
| Operating range       | Guaranteed operating range |
| Operating range limit | Typical operating range    |
| Operating range limit | 0 ... 150 m                |

### Electrical data

|                    |                              |
|--------------------|------------------------------|
| Protective circuit | Polarity reversal protection |
|                    | Short circuit protected      |
|                    | Transient protection         |

### Performance data

|                      |  |
|----------------------|--|
| Supply voltage $U_B$ | 10 ... 30 V, DC, Incl. residual ripple |
| Residual ripple      | 0 ... 15 %, From $U_B$                 |
| Open-circuit current | 0 ... 20 mA                            |

### Outputs

|                                     |            |
|-------------------------------------|------------|
| Number of digital switching outputs | 2 Piece(s) |
|-------------------------------------|------------|

#### Switching outputs

|                         |   |
|-------------------------|---|
| Voltage type            | DC  |
| Switching current, max. | 100 mA                                    |
| Switching voltage       | high: $\geq(U_B - 2V)$<br>low: $\leq 2 V$ |

#### Switching output 1

|                     |                     |
|---------------------|---------------------|
| Assignment          | Connection 1, pin 3 |
| Switching element   | Transistor, PNP     |
| Switching principle | Light switching     |

#### Switching output 2

|                     |                     |
|---------------------|---------------------|
| Assignment          | Connection 1, pin 4 |
| Switching element   | Transistor, PNP     |
| Switching principle | $U_B$ switching     |

### Time behavior

|                     |        |
|---------------------|--------|
| Switching frequency | 500 Hz |
| Response time       | 1 ms   |
| Readiness delay     | 300 ms |

### Connection 1

|                    |                              |
|--------------------|------------------------------|
| Function           | Signal OUT<br>Voltage supply |
| Type of connection | Terminal                     |
| Type of terminal   | Spring-cage terminal         |
| No. of pins        | 5 -pin                       |

### Mechanical data

|                       |   |
|-----------------------|---|
| Dimension (W x H x L) | 31 mm x 104 mm x 55.5 mm                              |
| Housing material      | Plastic   |
| Plastic housing       | PC  |
| Lens cover material   | Plastic   |
| Net weight            | 150 g   |
| Housing color         | Red   |
| Type of fastening     | Through-hole mounting<br>Via optional mounting device |

### Operation and display

|                 |            |
|-----------------|------------|
| Type of display | LED        |
| Number of LEDs  | 3 Piece(s) |

### Environmental data

|                                |               |
|--------------------------------|---------------|
| Ambient temperature, operation | -40 ... 60 °C |
| Ambient temperature, storage   | -40 ... 70 °C |

### Certifications

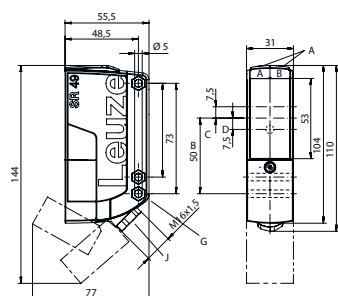
|                      |               |
|----------------------|---------------|
| Degree of protection | IP 67         |
| Protection class     | II            |
| Certifications       | c UL US       |
| Standards applied    | IEC 60947-5-2 |

### Classification

|                       |          |
|-----------------------|----------|
| Customs tariff number | 85365019 |
| ECLASS 5.1.4          | 27270901 |
| ECLASS 8.0            | 27270901 |
| ECLASS 9.0            | 27270901 |
| ECLASS 10.0           | 27270901 |
| ECLASS 11.0           | 27270901 |
| ECLASS 12.0           | 27270901 |
| ECLASS 13.0           | 27270901 |
| ECLASS 14.0           | 27270901 |
| ETIM 5.0              | EC002716 |
| ETIM 6.0              | EC002716 |
| ETIM 7.0              | EC002716 |
| ETIM 8.0              | EC002716 |
| ETIM 9.0              | EC002716 |

## Dimensioned drawings

All dimensions in millimeters



- AA Green LED
- AB Yellow LED
- B Optical axis
- C Receiver
- D Yellow LED
- G Countersinking for SK nut M5, 4.2 mm deep
- J Cable entry with M16x1.5 screw fitting for  $\varnothing 5 \dots 10$  mm

## Electrical connection

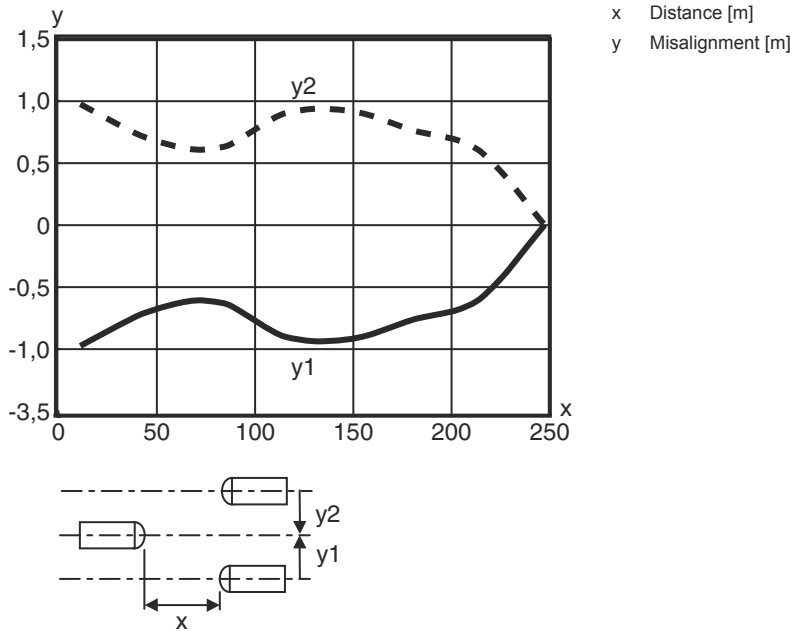
### Connection 1

|                    |                      |
|--------------------|----------------------|
| Function           | Signal OUT           |
|                    | Voltage supply       |
| Type of connection | Terminal             |
| Type of terminal   | Spring-cage terminal |
| No. of pins        | 5 -pin               |

| Terminal | Assignment |
|----------|------------|
| 1        | V+         |
| 2        | GND        |
| 3        | OUT 1      |
| 4        | OUT WARN   |
| 5        | n.c.       |

# Diagrams



## Typ. response behavior



## Operation and display

| LED | Display  | Meaning                                   |
|-----|--|---|
| 1   | Green, continuous light  | Operational readiness                     |
| 2   | Yellow, continuous light   | Light path free                           |
|     | Yellow, flashing   | Light path free, no function reserve      |
| 3   | Yellow, continuous light ( <b>alignment display</b> behind lens cover) | Light path free                           |
|     | Yellow, flashing ( <b>alignment display</b> behind lens cover)         | Light path free, minimum function reserve |

## Suitable transmitters

|   | Part no. | Designation | Article                                      | Description  |
|---|----------|-------------|--|--|
|  | 50134452 | LS49CI-TB   | Throughbeam photoelectric sensor transmitter | Operating range limit: 0 ... 150 m<br>Light source: LED, Infrared<br>Supply voltage: DC<br>Connection: Terminal, 5 -pin                                      |
|  | 50134453 | LS49CI.8-TB | Throughbeam photoelectric sensor transmitter | Special version: Activation input<br>Operating range limit: 0 ... 150 m<br>Light source: LED, Infrared<br>Supply voltage: DC<br>Connection: Terminal, 5 -pin |

## Part number code

Part designation: AAA49Cd.EEfG/iJ-KL

|               |  |
|---------------|--|
| <b>AAA49C</b> | <b>Operating principle / construction</b><br>PRK49C: Retro-reflective photoelectric sensor with polarization filter<br>HT49C: Diffuse reflection sensor with background suppression<br>LS49C: Throughbeam photoelectric sensor transmitter<br>LE49C: Throughbeam photoelectric sensor receiver   |
| <b>d</b>      | <b>Light type</b><br>n/a: red light<br>l: infrared light   |
| <b>EE</b>     | <b>Operating voltage</b><br>n/a: 10 ... 30 V, DC<br>UC: 20 ... 250V AC/DC (all-mains design)   |
| <b>f</b>      | <b>Equipment</b><br>H: With heating<br>D: Depolarizing media<br>1: 270° potentiometer<br>8: activation input (activation with high signal)   |
| <b>iJ</b>     | <b>Switching output / Function / OUT1OUT2</b><br>2: NPN transistor output, light switching<br>N: NPN transistor output, dark switching<br>4: PNP transistor output, light switching<br>P: PNP transistor output, dark switching<br>W: warning output<br>TS: Relay, NC contact/NO contact<br>M4: Low impedance MOSFET semiconductor switching output, NO contact<br>X: pin not used |
| <b>KL</b>     | <b>Electrical connection</b><br>TB: Terminal block - terminal compartment with spring terminals (5 x 1.5mm <sup>2</sup> )<br>n/a: cable, standard length 2000 mm<br>M12: M12 connector, 4-pin (plug)   |

### Note



A list with all available device types can be found on the Leuze website at [www.leuze.com](http://www.leuze.com).

## Notes



### Observe intended use!



- ⚠ This product is not a safety sensor and is not intended as personnel protection.
- ⚠ The product may only be put into operation by competent persons.
- ⚠ Only use the product in accordance with its intended use.

### For UL applications:




- ⓘ For UL applications, use is only permitted in Class 2 circuits in accordance with the NEC (National Electric Code).
- ⓘ These proximity switches shall be used with UL Listed Cable assemblies rated 30V, 0.5A min, in the field installation, or equivalent (categories: CYJV/ CYJV7 or PVVA/PVVA7)

## Further information


- All-insulated, rating voltage 250 VAC

## Accessories

### Mounting technology - Mounting brackets

|   | Part no. | Designation | Article         | Description  |
|---|----------|-------------|-----------------|--|
|  | 50025570 | BT 96       | Mounting device | Design of mounting device: Angle, L-shape<br>Fastening, at system: Through-hole mounting<br>Mounting bracket, at device: Screw type<br>Type of mounting device: Rigid<br>Material: Metal |

### Mounting technology - Rod mounts

|   | Part no. | Designation  | Article         | Description   |
|---|----------|--------------|-----------------|---|
|  | 50128380 | BTU 460M-D12 | Mounting system | Design of mounting device: Mounting system<br>Fastening, at system: For 12 mm rod<br>Mounting bracket, at device: Screw type<br>Type of mounting device: Adjustable, Turning, 360°<br>Material: Metal |

#### Note



A list with all available accessories can be found on the Leuze website in the Download tab of the article detailed page.