

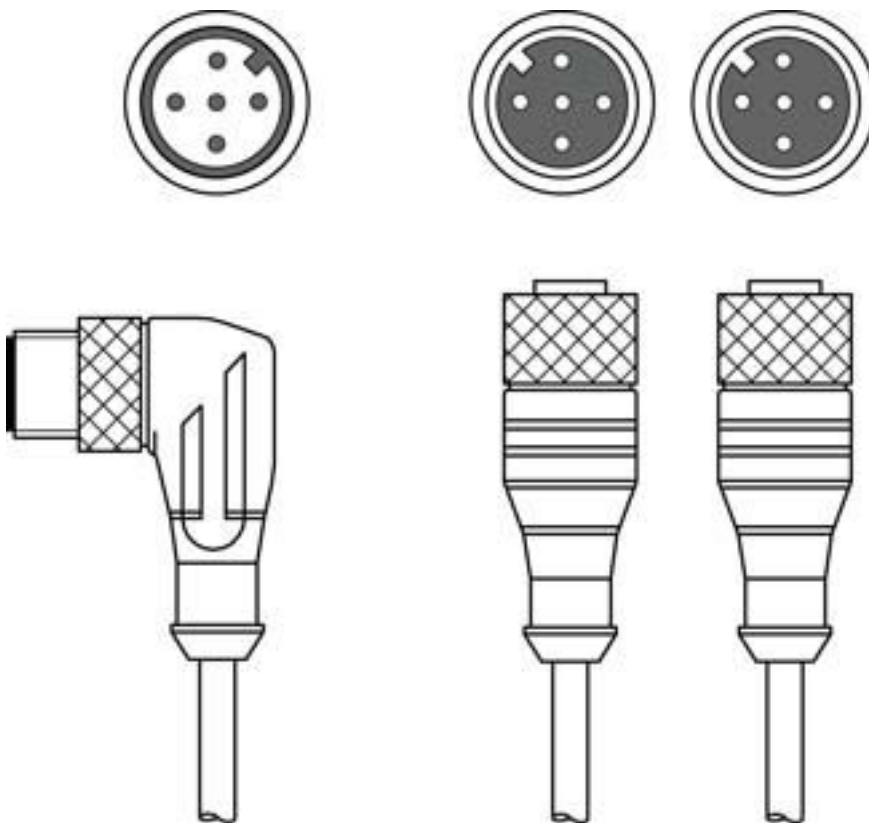
## Technical data sheet Interconnection cable

Part no.: 548952

CB-M12-Y1B

### Contents

- Technical data
- Electrical connection
- Circuit diagrams
- Accessories



For illustration purposes only



## Technical data

### Connection

#### Connection 1

|                      |           |
|----------------------|-----------|
| Type of connection   | Connector |
| Thread size          | M12       |
| Type                 | Male      |
| Handle body material | PUR       |
| Handle body color    | Black     |
| No. of pins          | 5 -pin    |
| Encoding             | A-coded   |
| Version              | Angled    |

#### Connection 2

|                      |           |
|----------------------|-----------|
| Type of connection   | Connector |
| Thread size          | M12       |
| Type                 | Female    |
| Handle body material | PUR       |
| Handle body color    | Black     |
| No. of pins          | 5 -pin    |
| Encoding             | A-coded   |
| Version              | Axial     |

#### Connection 3

|                      |           |
|----------------------|-----------|
| Type of connection   | Connector |
| Thread size          | M12       |
| Type                 | Female    |
| Handle body material | PUR       |
| No. of pins          | 5 -pin    |
| Encoding             | A-coded   |
| Version              | Axial     |
| Handle body color    | Black     |

#### Cable properties

|                             |                      |
|-----------------------------|----------------------|
| Number of conductors        | 5 Piece(s)           |
| Wire cross section          | 0.34 mm <sup>2</sup> |
| AWG                         | 22                   |
| Sheathing color             | Black                |
| Shielded                    | Yes                  |
| Silicone-free               | Yes                  |
| Cable design                | Distribution cable   |
| Cable diameter (external)   | 6 mm                 |
| Cable length                | 10,750 mm            |
| Cable length fork 1         | 750 mm               |
| Cable length fork 2         | 10,000 mm            |
| Sheathing material          | PUR                  |
| Wire insulation             | PP                   |
| Suitability for drag chains | No                   |

### Mechanical data

|                    |       |
|--------------------|-------|
| Width across flats | 13 mm |
| Net weight         | 389 g |

### Environmental data

|                                |               |
|--------------------------------|---------------|
| Ambient temperature, operation | -25 ... 80 °C |
|--------------------------------|---------------|

### Certifications

|                      |            |
|----------------------|------------|
| Degree of protection | IP 67      |
| Approvals            | c UL<br>UL |

### Classification

|                       |          |
|-----------------------|----------|
| Customs tariff number | 85444290 |
| ECLASS 5.1.4          | 27279201 |
| ECLASS 8.0            | 27279218 |
| ECLASS 9.0            | 27060311 |
| ECLASS 10.0           | 27060311 |
| ECLASS 11.0           | 27060311 |
| ECLASS 12.0           | 27060311 |
| ECLASS 13.0           | 27060311 |
| ECLASS 14.0           | 27060311 |
| ECLASS 15.0           | 27060311 |
| ECLASS 16.0           | 27060311 |
| ETIM 5.0              | EC001855 |
| ETIM 6.0              | EC001855 |
| ETIM 7.0              | EC001855 |
| ETIM 8.0              | EC001855 |
| ETIM 9.0              | EC001855 |
| ETIM 10.0             | EC001855 |
| UNSPSC 26.08          | 26121604 |

## Electrical connection

### Connection 1

|                      |           |
|----------------------|-----------|
| Type of connection   | Connector |
| Thread size          | M12       |
| Type                 | Male      |
| Handle body material | PUR       |
| Handle body color    | Black     |
| No. of pins          | 5 -pin    |
| Encoding             | A-coded   |
| Version              | Angled    |

# Electrical connection

## Connection 2

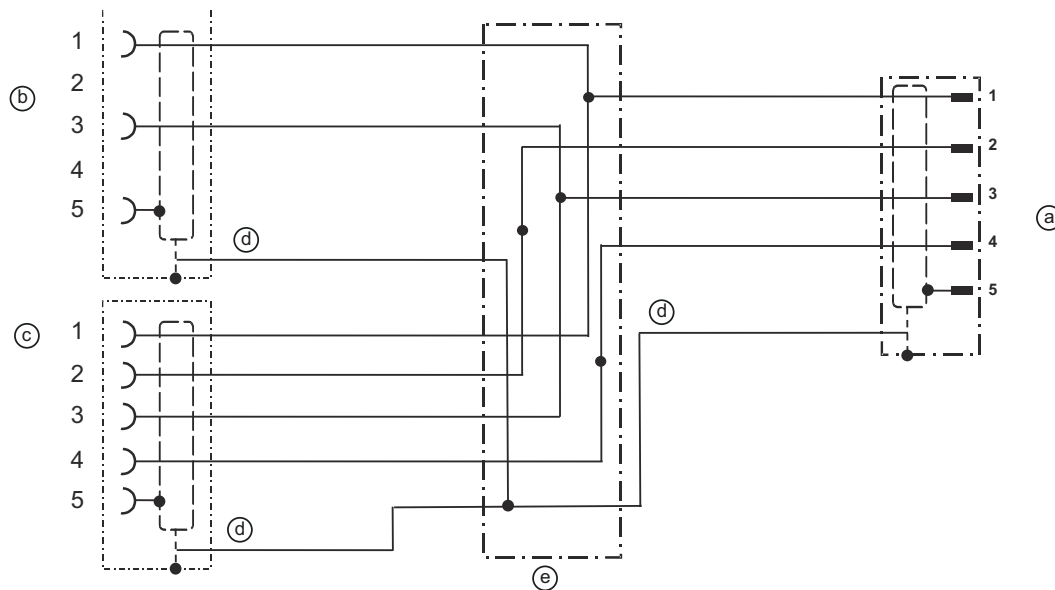
|                      |           |
|----------------------|-----------|
| Type of connection   | Connector |
| Thread size          | M12       |
| Type                 | Female    |
| Handle body material | PUR       |
| Handle body color    | Black     |
| No. of pins          | 5 -pin    |
| Encoding             | A-coded   |
| Version              | Axial     |

## Connection 3

|                      |           |
|----------------------|-----------|
| Type of connection   | Connector |
| Thread size          | M12       |
| Type                 | Female    |
| Handle body material | PUR       |
| No. of pins          | 5 -pin    |
| Encoding             | A-coded   |
| Version              | Axial     |
| Handle body color    | Black     |

# Circuit diagrams


## Wiring schematic




- a Connector, M12
- b Socket, M12
- c Socket, M12
- d Shield
- e T-connector

# Accessories

## General

|  | Part no. | Designation   | Article | Description   |
|--|----------|---------------|---------|---|
|  | 50132266 | TT-Set 0,6-13 | Tool    | Type: Torque key<br>Width across flats: 13 mm<br>Torque: 0.6 N·m<br>Material: Plastic, Stainless steel<br>Ambient temperature: -40 ... 120 °C |

| Note   |  |
|--|--|
|  | <p>A list with all available accessories can be found on the Leuze website in the Download tab of the article detailed page.</p> |